

CRAFT COOLER CUBE

ECO & HIGH PERFORMANCE

CARD BOARD CASE

Product characteristics



Inside is urethane used in refrigerators.



There is also a reusable plastic version.

General cold storage box
Approximately

5

times more
Retention time



Compact when delivered.
Space-saving warehouse storage. It can be done.

Representative size

15 liters

INNER : L250×W250×H250mm
OUTER : L300×W300×H300mm

36 liters

INNER : L330×W330×H330mm
OUTER : L380×W380×H380mm

Other sizes also available

Easy disposal



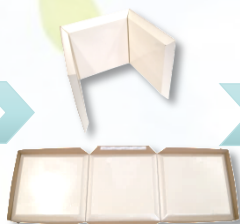
cut with scissors
to burning garbage

It can also be collected and thermally recycled. It becomes an alternative fuel to coal.

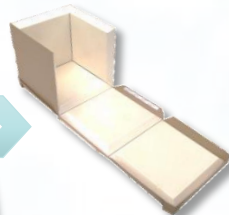
Outstanding cold storage performance !

By combining it with ice packs, you can transport perishables without using cool delivery!

Easy assembly in 10 seconds



fold



fit



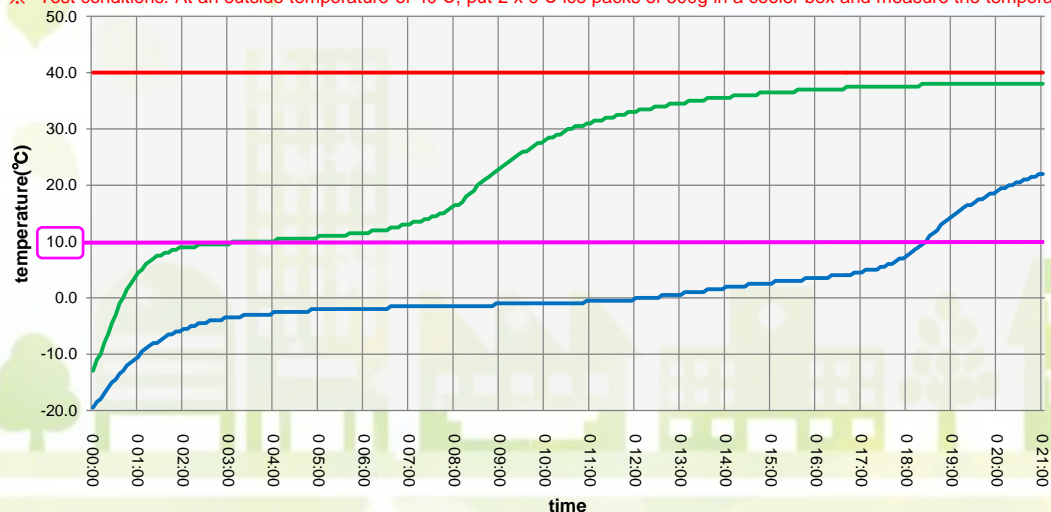
assemble



Completed!

Cold storage performance test data

※ Test conditions: At an outside temperature of 40°C, put 2 x 0°C ice packs of 500g in a cooler box and measure the temperature change of the ice packs.



General cold storage box

Craft Cooler Cube

temperature

**Below 10°C
over 18 hours**